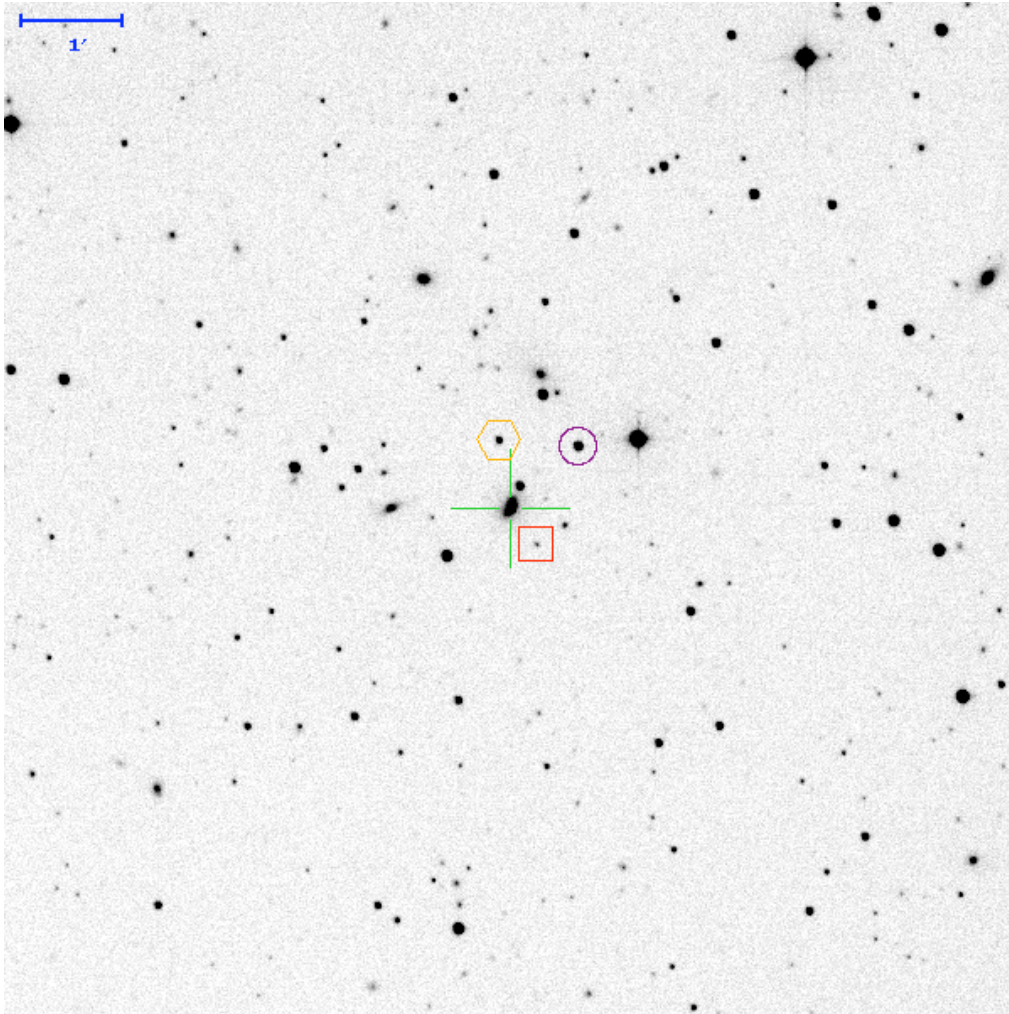


Finding Chart for PTF 10qjq (id=235092074)



New image shown ($R_{lim} = 20.5$). N is up, E is left.

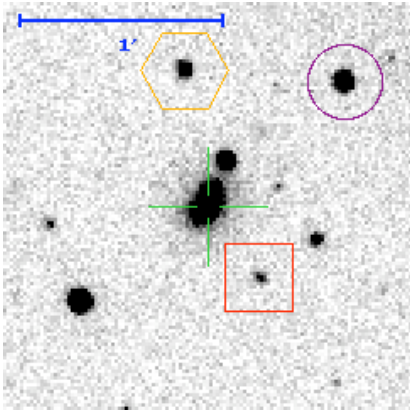
Candidate (green cross)		
RA	256.80164134 17:07:12.39	(J2000)
DEC	35.509793719 +35:30:35.3	
Mag (sub)	17.81 ± 0.03	R-band
Mag (ref)	15.03 ± 0.00	

		To			
		Target	box	hex	circle
From	Target	0	15.13" W 21.73" S	5.88" E 41.17" N	41.67" W 36.50" N
	box	15.13" E 21.73" N	0	21.01" E 62.90" N	26.54" W 58.23" N
	hex	5.89" W 41.17" S	21.01" W 62.90" S	0	47.55" W 4.67" S
	circle	41.67" E 36.50" S	26.55" E 58.23" S	47.55" E 4.67" N	0

Offset Star S1 (red box)		
RA	256.79647905 17:07:11.15	(J2000)
DEC	35.503758524 +35:30:13.5	
Mag (ref)	18.71 ± 0.02	R-band

Offset Star S2 (orange hex)		
RA	256.80364974 17:07:12.88	(J2000)
DEC	35.52122942 +35:31:16.4	
Mag (ref)	16.97 ± 0.00	R-band

Offset Star S3 (purple circle)		
--------------------------------	--	--



RA	256.78742071 17:07:08.98	(J2000)
DEC	35.519933005 +35:31:11.8	
Mag (ref)	15.50 ± 0.00	R-band

Show the image

Make the overview arcsec wide

Make the zoomed view arcsec wide